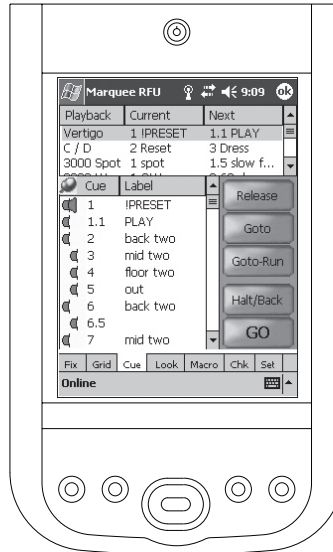


# Marquee® Remote Focus Unit



## Overview

The Marquee® Remote Focus Unit (RFU) is a handheld device that allows remote access and control of any Marquee console directly or across an existing network. The Remote Focus Unit is available in two models: Wired and Wireless.

The Wired Remote Focus Unit may be connected directly to the console, or connected to a mutual network connected directly to the console, via an RJ-45 Ethernet connection. The Wired RFU handheld unit is supplied with a RJ-45 PCI Card that connects to the console or network using a standard RJ-45 Ethernet cable.

The Wireless Remote Focus Unit is WIFI ready and is connected to the console using a mutual WIFI access point on the network. The Wireless RFU handheld unit is supplied with a Wireless Access Point that connects to the console or network using a standard RJ-45 Ethernet cable.

The Remote Focus Unit offers control of Marquee software functions including: fixture selection, fixture level display, DMX512 output display, cue list display and operation, "lookmaster" (subs) display and operation, and macro display and operation. The RFU also includes channel check and fixture flash tools.

## Applications

- Schools and Universities
- Local and Regional Theatres
- Houses of Worship
- TV Studios
- Special Events / Trade Shows
- Touring Shows
- Hotels / Hospitality

## Features

- Available in wired or wireless models
- Standard Ethernet connection to console or network (wired model)
- Standard WIFI connection to a wireless network (wireless model)
- Familiar Graphic User Interface - easy to operate
- Control of console functions - Fixture, Display, Grid, Cue List, Look, Masters, and Macros
- Software includes Channel Check and Fixture Flash Tools
- Brilliant 3.5" color TFT display w/ high performance backlight
- Software upgradeable via USB port on standard Windows PC
- Compact handheld unit

## Ordering Info

MQ-RFU-W	Remote Focus Unit - wired (includes RJ-45 PCI Card and RJ-45 Cables)
MQ-RFU	Remote Focus Unit - wireless (includes Wireless Access Point and RJ-45 Cables)

*Both models also include:*

USB Cradle with Battery Charging Slot & Leather Carrying Case

# Marquee® Remote Focus Unit

## Specifications

### General

- Factory approved and supplied handheld unit
- 3.5" color TFT display with high performance backlight

### Interface

- RJ-45 Ethernet Port via RJ-45 PCI Card (included)

### Software

- Dedicated Microsoft® Windows® CE Software

### Dimensions

- Length: 4.7 inches (119 mm), Height: 0.7 inches (16.9 mm)

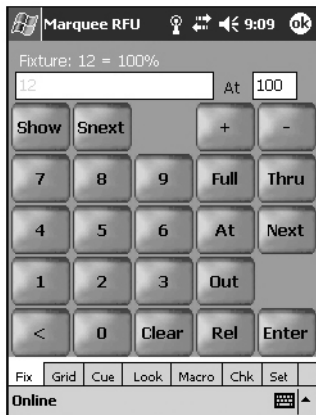
### Weight

- 5.9 oz (167 g)

### Power Source

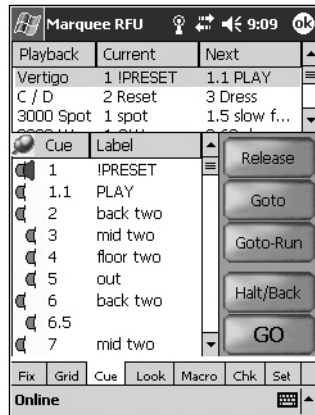
- 1100 mAh Lithium-Ion Removable, Rechargeable AC Adapter.

## Software Screens



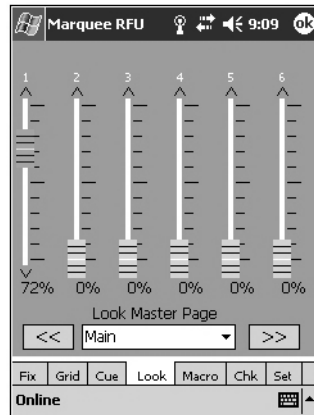
### Fixture Screen

Provides access to fixtures or groups of fixtures. Includes controls for selecting the fixtures and setting levels.



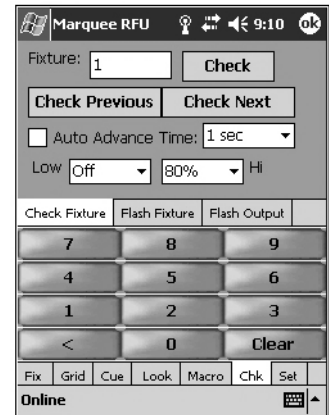
### Cue Screen

Provides access to all Cue Lists with buttons for play-back.



### Look Screen

Provides access to the Look Master pages. Includes virtual sliders for controlling fixture playback.



### Check Screen

Provides access to the Fixture Check, Flash and Flash Output controls.

This product may be covered by one or more of the following U.S. Patents: #4,413,211; 4,430,576; 4,465,956; 4,733,138; 4,792,731; 4,880,950; 4,988,840; 4,992,709; 5,004,969; 5,004,969; 5,128,654; 5,153,816; 5,189,259; 5,194,858; 5,239,255; 5,239,255; 5,371,439; 5,371,444; 5,506,480; 5,636,111; 5,642,104; 5,646,490; 5,814,550; 5,821,704; 5,920,156; 5,930,126; Des. #307,578; 333,124; 435,203; 440,207; License #4482844; 5,004,969; 5,239,255; and corresponding foreign patents. Other Utility, Design and Foreign Patents Pending. We reserve the right to change details of design, materials and finish in any way that will not alter the installed appearance or reduce function performance. Specifications are subject to change without notice.