

## Crossover Guide

Catalog Number – Catalog ID – Old Part #

### DMX Interfaces and Relay Panels



Pathway DMX Interfaces pg. 2  
Relay Panels pg. 2

### Repeaters/Splitters



DIN-mount Repeaters pg. 3  
Wall-mount Repeaters pg. 3  
Rack-mount Repeaters pg. 4  
Accessories pg. 5

### DMX/RDM Pathport<sup>®</sup> Gateways



DIN-mount pg. 6  
Wall-mount pg. 6  
Truss-mount pg. 6  
Desktop pg. 6  
Hand Held pg. 7  
Rack-mount pg. 7  
Accessories pg. 8

### Ethernet Switches



DIN-mount VIA Ethernet Switches pg. 9  
Rack-mount VIA pg. 9  
Accessories pg. 9

### Protocol Router/Converter



eLink pg. 10

### Controls and Consoles



Cognito<sup>2</sup> Theatrical Console pg. 11  
Choreo Controller pg. 12  
NSB and Vignette Wall Station Inserts pg. 13-17  
NSB and Vignette Gateways pg. 18  
Vignette Clock pg. 19  
Accessories pg. 19  
Vignette System Builder pg. 20

### Data Receptacles



System Assembly Tool pg. 21  
Faceplates pg. 22  
Inserts pg. 23-28  
Connectors pg. 29-30

### DIN Enclosures, Power Supplies and Assemblies



DIN Enclosures pg. 31  
DIN Power Supplies pg. 31  
DIN System Assemblies pg. 32

**This document is a reference guide that lists current and old numbers for Pathway Connectivity products.**

When ordering please use either the **Catalog Number** or **Catalog ID**. Old Part #s are for reference only.

**NOTE:** All product documentation, such as spec sheets, technical specification guides, drawings, manuals and videos, are found within each product webpage. Please search Pathway's website by the series in the Catalog Number (example: PWINF and PWPP) and follow the images.

## DMX Interfaces and Relay Panels

### PWINF | DMX Interfaces



Catalog Number	Catalog ID	Old Part #	Description
PWINF DIN CC	CI-274UU2	1003	DMX Interface, DIN-mount, 12 Contact Closure Relay (8")
PWINF DIN D2A	CI-274UUK	1004	DMX Interface, DIN-mount, 16 Channel Demultiplexer (6.25")
PWINF DIN A2D	CI-274UUC	1006	DMX Interface, DIN-mount, 24 Channel Analog to Digital (6.25")
PWINF DIN PWM4A	CI-274UUR	1008	DMX Interface, DIN-mount, 6 Channel Pulse Width Modulation 4 Amps DC Dimmer (8")
PWINF DIN PWM6A	CI-274UUV	1008-6A	DMX Interface, DIN-mount, 6 Channel Pulse Width Modulation 6 Amps DC Dimmer (8")
PWINF DIN NFP	CI-274UUH	6829	DMX Interface, DIN-mount, 2 Universe Network Fade Processor (4.5")

### PWRLY | Relay Lighting Controls



Catalog Number	Catalog ID	Old Part #	Description
PWRLY R8	CI-275FE0	4850-8	Relay Lighting Control Panel with 0-10v, 8-Relays
PWRLY R16	CI-275FCV	4850-16	Relay Lighting Control Panel with 0-10v, 16-Relays
PWACC R1NC	CI-275FCP	4850-RNCL	Pathway Accessory, 1 Relay NC Latching

# Repeaters/Splitters

## PWREP | Repeaters



Catalog Number	Catalog ID	Old Part #	Description
<b>PWREP DIN   DIN-Mount Repeaters</b>			
PWREP DIN P4 NONRDM	CI-274UV3	1002	DMX Repeater, DIN-mount, 4-Ports, DMX Only
PWREP DIN P4 RDM	CI-274UV5	1009	DMX Repeater, DIN-mount, 4-Ports, E1.20 RDM Compliant
PWREP DIN P8 RDMHUB	CI-274UV6	1016	DMX Repeater, DIN-mount, 8-Ports, Merge, Priority, HTP and Hub, RDM Compliant
PWREP DIN P3 RDMHUB	CI-274UV7	1017	DMX Repeater, DIN-mount, 3-Ports, Merge, Priority, HTP and Hub, RDM Compliant
<b>PWREP WM   Wall-Mount Repeaters</b>			
PWREP WM P4 TERM NONRDM SML	CI-2757A2	4807	DMX Repeater, Wall-mount, 4-Ports, Compression Fit Terminal, DMX Only, Small 10" x 13" x 4.5"
PWREP WM P8 TERM NONRDM SML	CI-2757AF	4808	DMX Repeater, Wall-mount, 8-Ports, Compression Fit Terminal, DMX Only, Small 10" x 13" x 4.5"
PWREP WM P12 TERM NONRDM MED	CI-2757AJ	4809	DMX Repeater, Wall-mount, 12-Ports, Compression Fit Terminal, DMX Only, Medium 10" x 23" x 4.5"
PWREP WM P16 TERM NONRDM MED	CI-2757AK	4810	DMX Repeater, Wall-mount, 16-Ports, Compression Fit Terminal, DMX Only, Medium 10" x 23" x 4.5"
PWREP WM P4 TERM RDM SML	CI-2757AN	4813	DMX Repeater, Wall-mount, 4-Ports, Compression Fit Terminal, E1.20 RDM Compliant, Small 10" x 13" x 4.5"
PWREP WM P8 TERM RDM MED	CI-2757AY	4814	DMX Repeater, Wall-mount, 8-Ports, Compression Fit Terminal, E1.20 RDM Compliant, Medium 10" x 23" x 4.5"
PWREP WM P12 TERM RDM MED	CI-2757C2	4815	DMX Repeater, Wall-mount, 12-Ports, Compression Fit Terminal, E1.20 RDM Compliant, Medium 10" x 23" x 4.5"

# Repeaters/ Splitters

## PWREP | Repeaters



Catalog Number	Catalog ID	Old Part #	Description
<b>PWREP RM   Rack-mount Repeaters</b>			
PWREP RM P8 XLR5F REAR NONRDM	CI-273W6V	9014	DMX Repeater, Rack-mount, 8-Ports, XLR 5-Pin Female, Rear Panel Connectors, DMX Only
PWREP RM P8 XLR3F REAR NONRDM	CI-273W7N	9014-3	DMX Repeater, Rack-mount, 8-Ports, XLR 3-Pin Female, Rear Panel Connectors, DMX Only
PWREP RM P8 TERM REAR NONRDM	CI-273W7V	9015	DMX Repeater, Rack-mount, 8-Ports, Compression Fit Terminal, Rear Panel Connectors, DMX Only
PWREP RM P8 XLR5F FRONT NONRDM	CI-273W84	9016	DMX Repeater, Rack-mount, 8-Ports, XLR 5-Pin Female, Front Panel Connectors, DMX Only
PWREP RM P8 XLR3F FRONT NONRDM	CI-273W86	9016-3	DMX Repeater, Rack-mount, 8-Ports, XLR 3-Pin Female, Front Panel Connectors, DMX Only
PWREP RM P8 RJ45EC REAR NONRDM	CI-273W88	9017	DMX Repeater, Rack-mount, 8-Ports, RJ45 EtherCON, Rear Panel Connectors, DMX Only
PWREP RM P8 RJ45EC FRONT NONRDM	CI-273W8E	9018	DMX Repeater, Rack-mount, 8-Ports, RJ45 EtherCON, Front Panel Connectors, DMX Only
PWREP RM P8 XLR5F REAR RDMHUB	CI-273W8J	9114	DMX Repeater, Rack-mount, 8-Ports, XLR 5-Pin Female, Rear Panel Connectors, Merge, Priority, HTP and Hub, RDM Compliant
PWREP RM P8 TERM REAR RDMHUB	CI-273W8N	9115	DMX Repeater, Rack-mount, 8-Ports, Compression Fit Terminal, Rear Panel Connectors, Merge, Priority, HTP and Hub, RDM Compliant
PWREP RM P8 XLR5F FRONT RDMHUB	CI-273W8V	9116	DMX Repeater, Rack-mount, 8-Ports, XLR 5-Pin Female, Front Panel Connectors, Merge, Priority, HTP and Hub, RDM Compliant
PWREP RM P8 RJ45EC REAR RDMHUB	CI-273W91	9117	DMX Repeater, Rack-mount, 8-Ports, RJ45 EtherCON, Rear Panel Connectors, Merge, Priority, HTP and Hub, RDM Compliant
PWREP RM P8 RJ45EC FRONT RDMHUB	CI-273W98	9118	DMX Repeater, Rack-mount, 8-Ports, RJ45 EtherCON, Front Panel Connectors, Merge, Priority, HTP and Hub, RDM Compliant

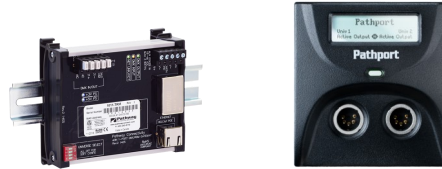
# Repeaters/ Splitters

## Accessories

Catalog Number	Catalog ID	Old Part #s	Description
			<b>Accessories for Rack Mountable Repeaters</b>
PWACC EARS	CI-27507A	9001	Pathway Accessory, 19" Replacement Rackmount Ear Kit
PWACC WMLG	CI-27507C	9002	Pathway Accessory, Large Rack-mount to Wall-mount kit
PWACC TMLG	CI-27507E	9003	Pathway Accessory, Large Rack-mount to Truss-mount kit
			<b>Screw Terminal Connector Blocks for DIN Interfaces and DIN Repeaters</b>
PWCON SPARE CSC5 Q4	CI-2750KY	2091	Connector, Spare, 5-Pin Compression Screw Connector, (Qty 4)
PWCON SPARE CSC6 Q2	CI-2750L2	2092	Connector, Spare, 6-Pin Compression Screw Connector, (Qty 2)
			<b>IDC Connector Blocks for DIN Interfaces and DIN Repeaters</b>
PWCON SPARE IDC5 Q4	CI-2750L4	2098	Connector, Spare, 5-Pin Insulation Displacement Contact Connector, (Qty 4)
PWCON SPARE IDC6 Q2	CI-2750L5	2099	Connector, Spare, 6-Pin Insulation Displacement Contact Connector, (Qty 2)
			<b>DIN Accessories</b>
PWACC DIN9	CI-27507T	New	Pathway Accessory, 35mm DIN rail (9")
PWACC ENDCAP Q6	CI-27507V	2101	Pathway Accessory, Replacement DIN end-cap kit, (Qty 6)

# DMX/RDM Gateways

## PWPP | Pathport®



Catalog Number	Catalog ID	Old Part #s	Description
<b>PWPP DIN   DIN-mount</b>			
PWPP DIN P1	CI-274UVE	6821	Pathport, DIN-mount, 1-Port
PWPP DIN P2	CI-274UVP	6822	Pathport, DIN-mount, 2-Ports
PWPP DIN P4*	CI-274UVV	6824	Pathport, DIN-mount, 4-Ports
<b>PWPP WM   Wall-Mount</b>			
PWPP WM P1 XLR5M SS	CI-2733YG	6101SS	Pathport, Wall-mount, 1-Port, XLR 5-Pin Male, Stainless Steel
PWPP WM P1 XLR5M BL	CI-2733YX	6101BL	Pathport, Wall-mount, 1-Port, XLR 5-Pin Male, Black
PWPP WM P1 XLR5F SS	CI-2733YR	6102SS	Pathport, Wall-mount, 1-Port, XLR 5-Pin Female, Stainless Steel
PWPP WM P1 XLR5F BL	CI-273403	6102BL	Pathport, Wall-mount, 1-Port, XLR 5-Pin Female, Black
PWPP WM P2 XLR5M BL	CI-27340F	6201	Pathport, Wall-mount, 2-Ports, XLR 5-Pin Male, Black
PWPP WM P2 XLR5F BL	CI-27340P	6202	Pathport, Wall-mount, 2-Ports, XLR 5-Pin Female, Black
PWPP WM P2 XLR5MF BL	CI-27340S	6203	Pathport, Wall-mount, 2-Ports, XLR 5-Pin Male and XLR 5-Pin Female, Black
PWACC PPREFURB	CI-27340V	6299	Pathway Accessory, Pathport 2-port Refurbishment Kit
<b>PWPP TM   Truss-Mount</b>			
PWPP TM P1 XLR5M	CI-273419	6151	Pathport, Truss-mount, 1-Port, XLR 5-Pin Male
PWPP TM P1 XLR5F	CI-27341A	6152	Pathport, Truss-mount, 1-Port, XLR 5-Pin Female
<b>PWPP DT   Desktop</b>			
PWPP DT P1 XLR5M	CI-27341C	6153	Pathport, Desktop, 1-Port, XLR 5-Pin Male
PWPP DT P1 XLR5F	CI-27341F	6154	Pathport, Desktop, 1-Port, XLR 5-Pin Female

\* Compatible with **SixEye** Remote Management

# DMX/RDM Gateways

**PWPP | Pathport®**



Catalog Number	Catalog ID	Old Part #s	Description
<b>PWPP HH   Hand-held</b>			
PWPP HH P1 XLR5F	CI-273418	6182	Pathport, Hand Held, 1-Port, XLR 5-Pin Female
<b>PWPP RM   Rack-mount Pathports</b>			
PWPP RM P4 XLR5F REAR *	CI-2733WN	6321	Pathport, Rack-mount, 4-Ports, XLR 5-Pin Female, Rear Panel Connectors
PWPP RM P4 TERM REAR *	CI-2733WY	6322	Pathport, Rack-mount, 4-Ports, Compression Fit Terminal, Rear Panel Connectors
PWPP RM P4 RJ45EC REAR *	CI-2733X8	6326	Pathport, Rack-mount, 4-Ports, RJ45 EtherCON, Rear Panel Connectors
PWPP RM P8 XLR5F REAR *	CI-2733XK	6421	Pathport, Rack-mount, 8-Ports, XLR 5-Pin Female, Rear Panel Connectors
PWPP RM P8 TERM REAR *	CI-2733XT	6422	Pathport, Rack-mount, 8-Ports, Compression Fit Terminal, Rear Panel Connectors
PWPP RM P8 XLR5F FRONT *	CI-2733Y0	6423	Pathport, Rack-mount, 8-Ports, XLR 5-Pin Female, Front Panel Connectors
PWPP RM P8 XLRTERM FRTRR *	CI-2733Y4	6424	Pathport, Rack-mount, 8-Ports, Front XR 5-pin Female, Rear Terminal, Front and Rear Panel Connectors
PWPP RM P8 XLR5F FRTRR *	CI-2733Y6	6425	Pathport, Rack-mount, 8-Ports, XLR 5-Pin Female, Front and Rear Panel Connectors
PWPP RM P8 RJ45EC REAR *	CI-2733Y7	6426	Pathport, Rack-mount, 8-Ports, RJ45 EtherCON, Rear Panel Connectors
PWPP RM P8 RJ45EC FRONT *	CI-2733YE	6427	Pathport, Rack-mount, 8-Ports, RJ45 EtherCON, Front Panel Connectors

All PWPP RM includes 19" Rack-mount kit

\* Compatible with **SixEye** Remote Management

# DMX/RDM Gateways

## Pathport Accessories

Catalog Number	Catalog ID	Old Part #s	Description
PWACC WMP1	CI-27506G	6900	Pathway Accessory, Pathport Single Gang Wall Mount Enclosure (c/w knockouts)
PWACC WMP2	CI-27506R	6901	Pathway Accessory, Pathport Dual Gang Wall Mount Enclosure (c/w knockouts)
PWACC TMP2	CI-27506U	6911	Pathway Accessory, Pathport P2 Portable/Truss Mount Enclosure
PWACC XLRMKIT	CI-27506X	6941	Pathway Accessory, Front XLR Connector Kit, Pathport Rack-mount 4-port, XLR5M Input (x4)
PWACC XLRFKIT	CI-27506Y	6942	Pathway Accessory, Front XLR Connector Kit, Pathport Rack-mount 4-port, XLR5F Output (x4)
PWACC XLRMFKIT	CI-275076	6943	Pathway Accessory, Front XLR Connector Kit, Pathport Rack-mount 4-port, XLR5M (x2), XLR5F (x2)
PWACC EARS	CI-27507A	9001	Pathway Accessory, 19" Replacement Rack-mount Ear Kit
PWACC WMLG	CI-27507C	9002	Pathway Accessory, Large Rack-mount to Wall-mount kit
PWACC TMLG	CI-27507E	9003	Pathway Accessory, Large Rack-mount to Truss-mount kit
PWACC TMSM	CI-27507F	9004	Pathway Accessory, Small Rack-mount to Truss mount kit
PWACC WMSM	CI-27507G	9005	Pathway Accessory, Small Rack-mount to Wall-mount kit
PWPWR WW BARL 24W 24VDC	CI-275064	1001-024-24-WW	Power Supply, Wallwart, Barrel, 24 Watts, 24 Volts DC



# Ethernet Switches

## PWVIA | VIA Ethernet Switches



Catalog Number	Catalog ID	Old Part #	Description
PWVIA DIN P8 RJ45 SFPSLOT POE*	CI-274URS	6708	VIA, DIN-mount, 8-Ports, RJ45 Connector, Empty SFP Slots, PoE Enabled
PWVIA DIN P16 RJ45 SFPSLOT POE*	CI-274US2	6716	VIA, DIN-mount, 16-Ports, RJ45 Connector, Empty SFP Slots, PoE Enabled
PWVIA RM P12 RJ45EC SFPSLOT NONPOE*	CI-273W9F	6750	VIA, Rack-mount, 12-Ports, RJ45 EtherCON, Empty SFP Slots, Without PoE
PWVIA RM P12 RJ45EC SFPSLOT POE*	CI-273W9L	6750-P	VIA, Rack-mount, 12-Ports, RJ45 EtherCON, Empty SFP Slots, PoE Enabled
PWVIA RM P12 RJ45EC DUO POE*	CI-273WA7	6752-P	VIA, Rack-mount, 12-Ports, RJ45 EtherCON, OpticalCON Duo, PoE Enabled
PWVIA RM P12 RJ45EC QUAD POE*	CI-273WA9	6754-P	VIA, Rack-mount, 12-Ports, RJ45 EtherCON, OpticalCON Quad, PoE Enabled

## Accessories

Catalog Number	Catalog ID	Old Part#	Description
PWPWR DIN TERM 100W 48VDC	CI-274UTF	1001-100-48-DIN	Power Supply, DIN-mount, Compression Fit Terminal, 100 Watts, 48 Volts
PWACC SFPP	CI-27507H	6798	Pathway Accessory, SFP+ 850nm 10GB Ethernet Optical Transceiver (VIA8, VIA12)
PWACC SFP	CI-27507J	6799	Pathway Accessory, SFP 850nm 1GB Ethernet Optical Transceiver (VIA8, VIA12, VIA16)
PWACC EARS	CI-27507A	9001	Pathway Accessory, 19" Replacement Rackmount Ear Kit
PWACC WMLG	CI-27507C	9002	Pathway Accessory, Large Rack-mount to Wall-mount kit
PWACC TMLG	CI-27507E	9003	Pathway Accessory, Large Rack-mount to Truss-mount kit
PWACC RJPATCH Q4	CI-27507U	2100-DIN	Pathway Accessory, DIN RJ45 patch (3.5" of rail for 4), (Qty 4)

\* Compatible with **SixEye** Remote Management

# Protocol Converter/Router

## PWELINK | eLink Router/Converter



Catalog Number	Catalog ID	Old Part #	Description
PWELINK RM P2 RJ45EC REAR*	CI-273WAG	6602	eLink Lighting Protocol Router, Rack-mount, 2-Ports, RJ45 EtherCON, Rear Panel Connectors

## Accessories

Catalog Number	Catalog ID	Old Part #	Description
PWPWR WW BARL 24W 24VDC	CI-275064	1001-024-24-WW	Power Supply, Wallwart, Barrel, 24 Watts, 24 Volts DC
PWACC TMSM	CI-27507F	9004	Pathway Accessory, Small Rack-mount to Truss mount kit
PWACC WMSM	CI-27507G	9005	Pathway Accessory, Small Rack-mount to Wall-mount kit

\* Compatible with **SixEye** Remote Management

# Controls and Consoles

## PWCOG | Cognito<sup>2</sup> Theatrical Controller



Catalog Number	Catalog ID	Old Part #	Description
PWCOG DT S512	CI-273WAK	0700-7111	Cognito 2 Theatrical Console, Desktop, Starter 512 Channels
PWCOG DT 512	CI-273WAN	0700-7112	Cognito 2 Theatrical Console, Desktop, 512 Channels
PWCOG DT 1024	CI-273WAT	0700-7113	Cognito 2 Theatrical Console, Desktop, 1024 Channels

## Accessories

Catalog Number	Catalog ID	Old Part #	Description
PWPWR WW BARL 24W 24VDC**	CI-275064	1001-024-24-WW	Power Supply, Wallwart, Barrel, 24 Watts, 24 Volts DC
PWACC COGRM	CI-27507M	0700-7901	Pathway Accessory, Cognito Rack Mount Kit
PWACC ADDPRO	CI-27507K	0700-7814	Pathway Accessory, Upgrade from Starter to Pro
PWACC ADD512	CI-27507L	0700-7815	Pathway Accessory, Add 512 Channels

\*\* For use with Cognito<sup>2</sup>. All versions of Cognito<sup>2</sup> are PoE but ship with this 24VDC power supply for use when PoE is not an option. These can be purchased separately as replacements.

Any Pathport Gateway on your network will authorize a CognitoPC for one universe of DMX.

## Controls and Consoles

### PWCHOREO | Choreo™ Architectural Controller



Catalog Number	Catalog ID	Old Part #	Description
PWCHOREO WM 512	CI-273WCE	0700-7302	Choreo Architectural Controller, Wall-mount, 512 Channels
PWCHOREO WM 1024	CI-273W50	0700-7303	Choreo Architectural Controller, Wall-mount, 1024 Channels
PWCHOREO DIN 512	CI-274UXE	0700-7312	Choreo Architectural Controller, DIN-mount, 512 Channels
PWCHOREO DIN 1024	CI-274UXH	0700-7313	Choreo Architectural Controller, DIN-mount, 1024 Channels

### Accessories

Catalog Number	Catalog ID	Old Part #	Description
PWPWR DIN TERM 50W 24VDC	CI-274UT2	100-050-24-DIN	Power Supply, DIN-mount, Compression Fit Terminal, 50 Watts, 24 Volts DC
PWACC CHORDT	CI-27507N	0700-7904	Pathway Accessory, Choreo Desktop Consolette
PWACC CHORRM	CI-27507R	0700-7907	Pathway Accessory, Choreo 4RU rack panel, with one 3-gang position

# Controls and Consoles

## PWWSI | Wall Station Inserts

**NSB™** and **Vignette™ Wall Stations** are modular systems of single-gang button and slider inserts.

There are two wiring technologies available. The PoE wall stations connect through an Ethernet switch, such as the VIA16, which powers the stations using Power-over-Ethernet (required). The RS485 wall stations connect to the appropriate DIN-mountable Architectural Gateway using a multi-drop serial data bus.

Order à la carte to be installed as wall stations. Include one master and multiple local inserts, along with a faceplate up to six gangs wide. Inserts fit into standard electrical device boxes.

Using the System Assembly Tool you can create a Bill of Materials required to complete your wall station. The tool will also create a drawing, giving you a visual of how the station should be assembled.

Please note that the System Assembly Tool will create a one line part # for the complete station, starting with PWWSK. This part# should not be used when placing orders as we will not ship factory assembled stations. See page 22 for more details.

Use the Vignette System Builder to create complete Vignette systems, which include DIN cabinets along with the Wall Stations. Download the System Builder Tool from our [website](#).



# Controls and Consoles

## PWWSI | NSB™ Wall Station Inserts

NSB Inserts fully compatible with the Cognito<sup>2</sup> and Choreo



Catalog Number	Catalog ID	Old Part #	Description
			<b>PWWSI NPOE   NSB POE Master Insert</b>
PWWSI NPOE B2 BL	CI-273W58	0700-5311BL	Wall Station Insert, NSB Power over Ethernet Master, 2-Buttons, Black
PWWSI NPOE B2 WH	CI-273W62	0700-5311WH	Wall Station Insert, NSB Power over Ethernet Master, 2-Buttons, White
PWWSI NPOE B4 BL	CI-273W5A	0700-5312BL	Wall Station Insert, NSB Power over Ethernet Master, 4-Buttons, Black
PWWSI NPOE B4 WH	CI-273W63	0700-5312WH	Wall Station Insert, NSB Power over Ethernet Master, 4-Buttons, White
PWWSI NPOE S1 BL	CI-273W5C	0700-5313BL	Wall Station Insert, NSB Power over Ethernet Master, Single Slider, Black
PWWSI NPOE S1 WH	CI-273W6L	0700-5313WH	Wall Station Insert, NSB Power over Ethernet Master, Single Slider, White
PWWSI NPOE S2 BL	CI-273W5X	0700-5314BL	Wall Station Insert, NSB Power over Ethernet Master, Dual Slider, Black
PWWSI NPOE S2 WH	CI-273W6N	0700-5314WH	Wall Station Insert, NSB Power over Ethernet Master, Dual Slider, White
PWWSI NPOE S3 BL	CI-273W61	0700-5315BL	Wall Station Insert, NSB Power over Ethernet Master, Triple Slider, Black
PWWSI NPOE S3 WH	CI-273W6P	0700-5315WH	Wall Station Insert, NSB Power over Ethernet Master, Triple Slider, White
			<b>PWWSI N485   NSB 485 Master Insert</b>
PWWSI N485 B2 BL	CI-273W6T	0700-5331BL	Wall Station Insert, NSB RS485 Master, 2-Buttons, Black
PWWSI N485 B2 WH	CI-273W75	0700-5331WH	Wall Station Insert, NSB RS485 Master, 2-Buttons, White
PWWSI N485 B4 BL	CI-273W6W	0700-5332BL	Wall Station Insert, NSB RS485 Master, 4-Buttons, Black
PWWSI N485 B4 WH	CI-273W7A	0700-5332WH	Wall Station Insert, NSB RS485 Master, 4-Buttons, White
PWWSI N485 S1 BL	CI-273W6Y	0700-5333BL	Wall Station Insert, NSB RS485 Master, Single Slider, Black
PWWSI N485 S1 WH	CI-273W8R	0700-5333WH	Wall Station Insert, NSB RS485 Master, Single Slider, White
PWWSI N485 S2 BL	CI-273W72	0700-5334BL	Wall Station Insert, NSB RS485 Master, Dual Slider, Black
PWWSI N485 S2 WH	CI-273W8U	0700-5334WH	Wall Station Insert, NSB RS485 Master, Dual Slider, White
PWWSI N485 S3 BL	CI-273W73	0700-5335BL	Wall Station Insert, NSB RS485 Master, Triple Slider, Black
PWWSI N485 S3 WH	CI-273W8X	0700-5335WH	Wall Station Insert, NSB RS485 Master, Triple Slider, White

# Controls and Consoles

## PWWSI | NSB™ Wall Station Inserts

NSB Inserts fully compatible with the Cognito<sup>2</sup> and Choreo



Catalog Number	Catalog ID	Old Part #	Description
			<b>PWWSI LOC   Local Insert</b>
PWWSI LOC B2 BL	CI-2750AA	0700-5901BL	Wall Station Insert, Local, 2-Buttons, Black
PWWSI LOC B2 WH	CI-2750AT	0700-5901WH	Wall Station Insert, Local, 2-Buttons, White
PWWSI LOC B4 BL	CI-2750AH	0700-5902BL	Wall Station Insert, Local, 4-Buttons, Black
PWWSI LOC B4 WH	CI-2750AU	0700-5902WH	Wall Station Insert, Local, 4-Buttons, White
PWWSI LOC S1 BL	CI-2750AL	0700-5903BL	Wall Station Insert, Local, Single Slider, Black
PWWSI LOC S1 WH	CI-2750AW	0700-5903WH	Wall Station Insert, Local, Single Slider, White
PWWSI LOC S2 BL	CI-2750AN	0700-5904BL	Wall Station Insert, Local, Dual Slider, Black
PWWSI LOC S2 WH	CI-2750AX	0700-5904WH	Wall Station Insert, Local, Dual Slider, White
PWWSI LOC S3 BL	CI-2750AR	0700-5905BL	Wall Station Insert, Local, Triple Slider, Black
PWWSI LOC S3 WH	CI-2750C0	0700-5905WH	Wall Station Insert, Local, Triple Slider, White

# Controls and Consoles

## PWWSI | Vignette™ Wall Station Inserts



Vignette Inserts for stand-alone sACN and DMX512 Snapshot Record and Recall control systems

Catalog Number	Catalog ID	Old Part #	Description
			<b>PWWSI VPOE   Vignette POE Master Insert</b>
PWWSI VPOE B2 BL	CI-273W92	0700-5411BL	Wall Station Insert, Vignette Power over Ethernet Master, 2-Buttons, Black
PWWSI VPOE B2 WH	CI-273WA2	0700-5411WH	Wall Station Insert, Vignette Power over Ethernet Master, 2-Buttons, White
PWWSI VPOE B4 BL	CI-273W93	0700-5412BL	Wall Station Insert, Vignette Power over Ethernet Master, 4-Buttons, Black
PWWSI VPOE B4 WH	CI-273WA5	0700-5412WH	Wall Station Insert, Vignette Power over Ethernet Master, 4-Buttons, White
PWWSI VPOE S1 BL	CI-273W99	0700-5413BL	Wall Station Insert, Vignette Power over Ethernet Master, Single Slider, Black
PWWSI VPOE S1 WH	CI-273WA6	0700-5413WH	Wall Station Insert, Vignette Power over Ethernet Master, Single Slider, White
PWWSI VPOE S2 BL	CI-273W9A	0700-5414BL	Wall Station Insert, Vignette Power over Ethernet Master, Dual Slider, Black
PWWSI VPOE S2 WH	CI-273WAA	0700-5414WH	Wall Station Insert, Vignette Power over Ethernet Master, Dual Slider, White
PWWSI VPOE S3 BL	CI-273WA0	0700-5415BL	Wall Station Insert, Vignette Power over Ethernet Master, Triple Slider, Black
PWWSI VPOE S3 WH	CI-273WAF	0700-5415WH	Wall Station Insert, Vignette Power over Ethernet Master, Triple Slider, White
			<b>PWWSI V485   Vignette 485 Master Insert</b>
PWWSI V485 B2 BL	CI-273WAS	0700-5431BL	Wall Station Insert, Vignette RS485 Master, 2-Buttons, Black
PWWSI V485 B2 WH	CI-273WC9	0700-5431WH	Wall Station Insert, Vignette RS485 Master, 2-Buttons, White
PWWSI V485 B4 BL	CI-273WAV	0700-5432BL	Wall Station Insert, Vignette RS485 Master, 4-Buttons, Black
PWWSI V485 B4 WH	CI-273WCC	0700-5432WH	Wall Station Insert, Vignette RS485 Master, 4-Buttons, White
PWWSI V485 S1 BL	CI-273WAW	0700-5433BL	Wall Station Insert, Vignette RS485 Master, Single Slider, Black
PWWSI V485 S1 WH	CI-273WCG	0700-5433WH	Wall Station Insert, Vignette RS485 Master, Single Slider, White
PWWSI V485 S2 BL	CI-273WC2	0700-5434BL	Wall Station Insert, Vignette RS485 Master, Dual Slider, Black
PWWSI V485 S2 WH	CI-273WCH	0700-5434WH	Wall Station Insert, Vignette RS485 Master, Dual Slider, White
PWWSI V485 S3 BL	CI-273WC7	0700-5435BL	Wall Station Insert, Vignette RS485 Master, Triple Slider, Black
PWWSI V485 S3 WH	CI-273WCJ	0700-5435WH	Wall Station Insert, Vignette RS485 Master, Triple Slider, White



# Controls and Consoles

## PWWSI | Vignette™ Wall Station Inserts



Vignette Inserts for stand-alone sACN and DMX512 Snapshot Record and Recall control systems

Catalog Number	Catalog ID	Old Part #	Description
			<b>PWWSI LOC   Local Insert</b>
PWWSI LOC B2 BL	CI-2750AA	0700-5901BL	Wall Station Insert, Local, 2-Buttons, Black
PWWSI LOC B2 WH	CI-2750AT	0700-5901WH	Wall Station Insert, Local, 2-Buttons, White
PWWSI LOC B4 BL	CI-2750AH	0700-5902BL	Wall Station Insert, Local, 4-Buttons, Black
PWWSI LOC B4 WH	CI-2750AU	0700-5902WH	Wall Station Insert, Local, 4-Buttons, White
PWWSI LOC S1 BL	CI-2750AL	0700-5903BL	Wall Station Insert, Local, Single Slider, Black
PWWSI LOC S1 WH	CI-2750AW	0700-5903WH	Wall Station Insert, Local, Single Slider, White
PWWSI LOC S2 BL	CI-2750AN	0700-5904BL	Wall Station Insert, Local, Dual Slider, Black
PWWSI LOC S2 WH	CI-2750AX	0700-5904WH	Wall Station Insert, Local, Dual Slider, White
PWWSI LOC S3 BL	CI-2750AR	0700-5905BL	Wall Station Insert, Local, Triple Slider, Black
PWWSI LOC S3 WH	CI-2750C0	0700-5905WH	Wall Station Insert, Local, Triple Slider, White

# Controls and Consoles

## PWGW | Architectural Gateways



The NSB 485 Gateway provides an Ethernet connection for your Cognito<sup>2</sup> console or Choreo controller to the NSB 485 button and slider stations using a multi-drop serial data bus.

Catalog Number	Catalog ID	Old Part #	Description
			<b>PWGW   NSB Architectural Gateway</b>
PWGW DIN N	CI-274UWP	0700-5390	Architectural Gateway, DIN-mount, NSB (4.5")
PWGW DIN NC8	CI-274UWR	0700-5392	Architectural Gateway, DIN-mount, NSB w 8 Contact Closures (6.25")
PWGW DIN NC16	CI-274UWU	0700-5393	Architectural Gateway, DIN-mount, NSB w 16 Contact Closures (8")

The Vignette Ethernet Gateway provides connectivity for Vignette 485 button and slider stations using a multi-drop serial data bus for recording and recall of E1.31 sACN and DMX512 lighting snapshots and zone control.

Catalog Number	Catalog ID	Old Part #	Description
			<b>PWGW   Vignette Architectural Gateway</b>
PWGW DIN V	CI-274UW7	0700-5490	Architectural Gateway, DIN-mount, Vignette (4.5")
PWGW DIN VD2	CI-274UW8	0700-5491	Architectural Gateway, DIN-mount, Vignette w 2 DMX (6.25")
PWGW DIN VD2C8	CI-274UWC	0700-5492	Architectural Gateway, DIN-mount, Vignette w 2 DMX & 8 Contact Closures (8")
PWGW DIN VC16	CI-274UWE	0700-5493	Architectural Gateway, DIN-mount, Vignette w 16 Contact Closures (8")
PWGW DIN VE	CI-274UWF	0700-5494	Architectural Gateway, DIN-mount, Vignette w Secondary Ethernet (6.25")
PWGW DIN VE2C8	CI-274UWH	0700-5495	Architectural Gateway, DIN-mount, Vignette w Secondary Ethernet & 8 Contact Closures (8")

# Controls and Consoles

## PWGW | Architectural Gateway, Vignette Clock

Vignette Clock automates playback functions according to date, time or astronomical events with the use of Pathscope configuration software.

Catalog Number	Catalog ID	Old Part #	Description
PWGW DIN CLK*	CI-274UWK	0700-5481	Architectural Gateway, DIN-mount, Vignette Clock (4.5")

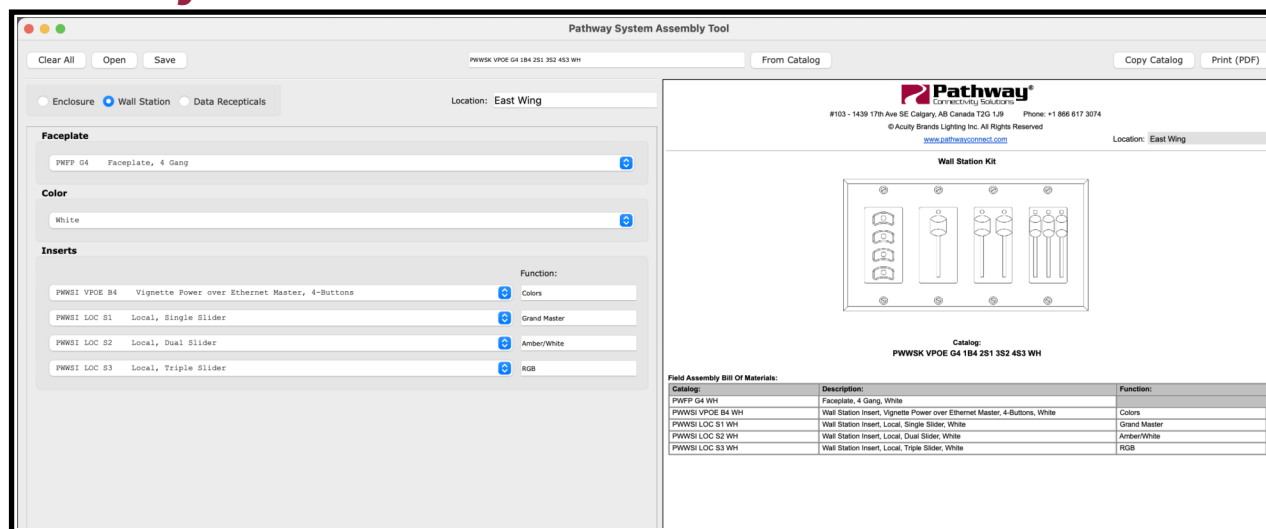
## PWWSI and PWGW Accessories

Catalog Number	Catalog ID	Old Part #	Description
PWFP G1 BL	CI-274UNE	5001BL	Faceplate, 1 Gang, Black
PWFP G1 WH	CI-274UR3	5001WH	Faceplate, 1 Gang, White
PWFP G2 BL	CI-274UNF	5002BL	Faceplate, 2 Gang, Black
PWFP G2 WH	CI-274UR5	5002WH	Faceplate, 2 Gang, White
PWFP G3 BL	CI-274UNW	5003BL	Faceplate, 3 Gang, Black
PWFP G3 WH	CI-274UR7	5003WH	Faceplate, 3 Gang, White
PWFP G4 BL	CI-274UP3	5004BL	Faceplate, 4 Gang, Black
PWFP G4 WH	CI-274URC	5004WH	Faceplate, 4 Gang, White
PWFP G5 BL	CI-274UPE	5005BL	Faceplate, 5 Gang, Black
PWFP G5 WH	CI-274URE	5005WH	Faceplate, 5 Gang, White
PWFP G6 BL	CI-274UPR	5006BL	Faceplate, 6 Gang, Black
PWFP G6 WH	CI-274URK	5006WH	Faceplate, 6 Gang, White
PWACC WSDT	CI-27507P	0700-7905	Pathway Accessory, 3-Gang PoE Desktop Consolette
PWACC D3G	CI-27507S	0700-7908	Pathway Accessory, Stage Manager's 4U rack panel, with dual 3-gang positions
PWPWR DIN TERM 50W 24VDC	CI-274UT2	1001-050-24-DIN	Power Supply, DIN-mount, Compression Fit Terminal, 50 Watts, 24 Volts DC
PWPWR DIN TERM 100W 24VDC	CI-274UT7	1001-100-24-DIN	Power Supply, DIN-mount, Compression Fit Terminal, 100 Watts, 24 Volts DC
PWCON SPARE CSC6 Q2	CI-2750L2	2092	Connector, Spare, 6-Pin Compression Screw Connector, (Qty 2)
PWACC DIN9	CI-27507T	New	Pathway Accessory, 35mm DIN rail (9")

\* Compatible with **SixEye** Remote Management

# Controls and Consoles

## Pathway Assembly Tool for Wall Stations



Use the [Pathway System Assembly Tool](#) to order complete kits (PWWSK) for single or multi-gang wall stations for Vignette and NSB.

- Select the number of gangs for the wall station, up to 6.
- Choose the color of the wall station.
- Select the first station as Vignette or NSB, either PoE or 485 wiring type.
- Choose addition button or slider stations, until the wall station is complete.
- The wall station appears as both a drawing, and a complete Bill of Materials.
- Press Copy Catalog to copy then Paste the complete PWWSK catalog number into your order email.

\*Please note: Wall Stations will not be assembled in factory. When ordered, each part will ship as separate line items and will not reference the one line Catalog # (starting with PWWSK) shown in software.

Create complete Vignette system bills of material and drawings using the Free downloadable [Vignette System Builder](#) software for straightforward, visual configuration of both Wall Stations and DIN cabinet assemblies. (Win64 and macOS compatible)

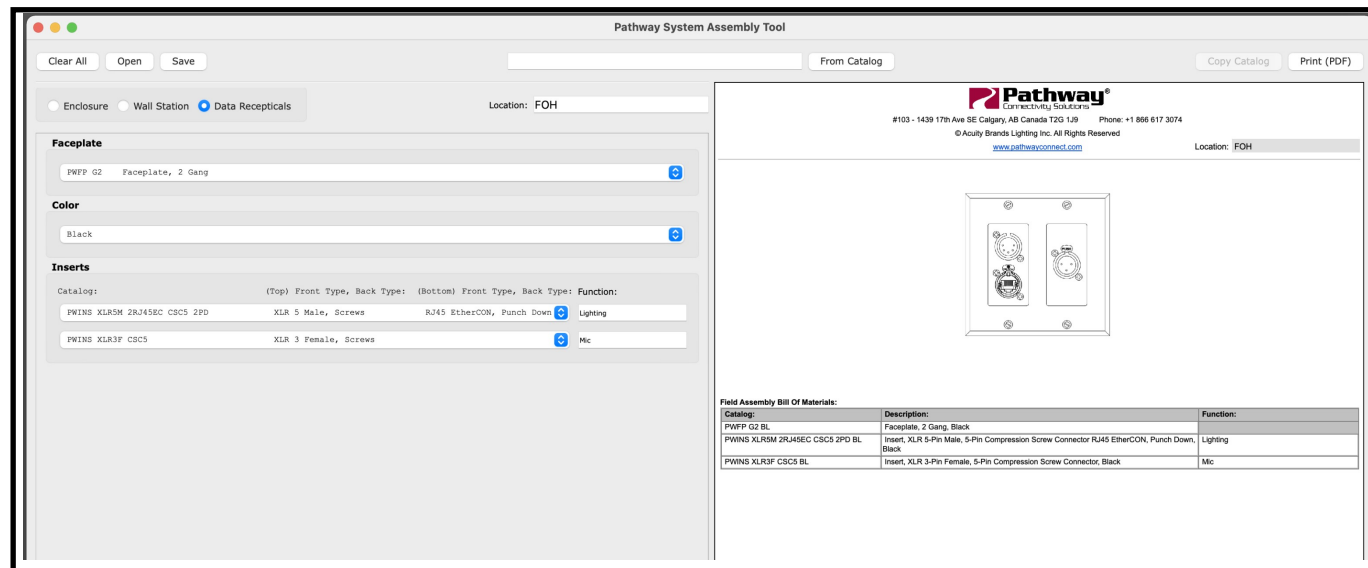
# Data Receptacles and Connectors

## Pathway System Assembly Tool for Data Receptacles

Verify part numbers with a visual depiction of the custom data receptacles you need using the Free downloadable [System Assembly Tool](#) software (Win64 and macOS compatible)

- Select the number of gangs for the data receptacle, up to 6.
- Choose the color of the data receptacle.
- Select each data receptacle from the extensive list. Single receptacles appear in the list before dual. The values first show the front connector, a comma, then the rear connector.
- The completed receptacle appears as both a drawing, and a complete Bill of Materials
- Copy the individual catalog numbers from the Bill of material to use in your order email.

\*Please note: When ordered, each part will ship as separate line items



# Data Receptacles and Connectors

## PWFP | Faceplates

Catalog Number	Catalog ID	Old Part #	Description
PWFP G1 BL	CI-274UNE	5001BL	Faceplate, 1 Gang, Black
PWFP G1 SS	CI-274UK5	5001SS	Faceplate, 1 Gang, Stainless Steel
PWFP G1 WH	CI-274UR3	5001WH	Faceplate, 1 Gang, White
PWFP G2 BL	CI-274UNF	5002BL	Faceplate, 2 Gang, Black
PWFP G2 SS	CI-274UKF	5002SS	Faceplate, 2 Gang, Stainless Steel
PWFP G2 WH	CI-274UR5	5002WH	Faceplate, 2 Gang, White
PWFP G3 BL	CI-274UNW	5003BL	Faceplate, 3 Gang, Black
PWFP G3 SS	CI-274UKV	5003SS	Faceplate, 3 Gang, Stainless Steel
PWFP G3 WH	CI-274UR7	5003WH	Faceplate, 3 Gang, White
PWFP G4 BL	CI-274UP3	5004BL	Faceplate, 4 Gang, Black
PWFP G4 SS	CI-274UM1	5004SS	Faceplate, 4 Gang, Stainless Steel
PWFP G4 WH	CI-274URC	5004WH	Faceplate, 4 Gang, White
PWFP G5 BL	CI-274UPE	5005BL	Faceplate, 5 Gang, Black
PWFP G5 SS	CI-274UMH	5005SS	Faceplate, 5 Gang, Stainless Steel
PWFP G5 WH	CI-274URE	5005WH	Faceplate, 5 Gang, White
PWFP G6 BL	CI-274UPR	5006BL	Faceplate, 6 Gang, Black
PWFP G6 SS	CI-274UMX	5006SS	Faceplate, 6 Gang, Stainless Steel
PWFP G6 WH	CI-274URK	5006WH	Faceplate, 6 Gang, White

# Data Receptacles and Connectors

## PWINS | Receptacle Inserts

Catalog Number	Catalog ID	Old Part #	Description
PWINS BLANK NONE BL	CI-274UN6	5100BL	Insert, Blank, Black
PWINS BLANK NONE SS	CI-274UJ6	5100SS	Insert, Blank, Stainless Steel
PWINS BLANK NONE WH	CI-274UPY	5100WH	Insert, Blank, White
PWINS XLR5M CSC5 BL	CI-2750N3	5101BL	Insert, XLR 5-Pin Male, 5-Pin Compression Screw Connector, Black
PWINS XLR5M CSC5 SS	CI-2750LW	5101SS	Insert, XLR 5-Pin Male, 5-Pin Compression Screw Connector, Stainless Steel
PWINS XLR5M CSC5 WH	CI-2750NY	5101WH	Insert, XLR 5-Pin Male, 5-Pin Compression Screw Connector, White
PWINS XLR5F CSC5 BL	CI-2750N5	5102BL	Insert, XLR 5-Pin Female, 5-Pin Compression Screw Connector, Black
PWINS XLR5F CSC5 SS	CI-2750MK	5102SS	Insert, XLR 5-Pin Female, 5-Pin Compression Screw Connector, Stainless Steel
PWINS XLR5F CSC5 WH	CI-2750P1	5102WH	Insert, XLR 5-Pin Female, 5-Pin Compression Screw Connector, White
PWINS XLR4M CSC5 BL	CI-2750N8	5103BL	Insert, XLR 4-Pin Male, 5-Pin Compression Screw Connector, Black
PWINS XLR4M CSC5 SS	CI-2750MM	5103SS	Insert, XLR 4-Pin Male, 5-Pin Compression Screw Connector, Stainless Steel
PWINS XLR4F CSC5 BL	CI-2750NC	5104BL	Insert, XLR 4-Pin Female, 5-Pin Compression Screw Connector, Black
PWINS XLR4F CSC5 SS	CI-2750MS	5104SS	Insert, XLR 4-Pin Female, 5-Pin Compression Screw Connector, Stainless Steel
PWINS XLR4F CSC5 WH	CI-2750P4	5104WH	Insert, XLR 4-Pin Female, 5-Pin Compression Screw Connector, White
PWINS RJ45EC PD BL	CI-2750NF	5105BL	Insert, RJ45 EtherCON, Punch Down, Black
PWINS RJ45EC PD SS	CI-2750MV	5105SS	Insert, RJ45 EtherCON, Punch Down, Stainless Steel
PWINS RJ45EC PD WH	CI-2750P8	5105WH	Insert, RJ45 EtherCON, Punch Down, White

# Data Receptacles and Connectors

## PWINS | Receptacle Inserts

Catalog Number	Catalog ID	Old Part #	Description
PWINS XLR3M CSC5 BL	CI-2750NH	5107BL	Insert, XLR 3-Pin Male, 5-Pin Compression Screw Connector, Black
PWINS XLR3M CSC5 SS	CI-2750MW	5107SS	Insert, XLR 3-Pin Male, 5-Pin Compression Screw Connector, Stainless Steel
PWINS XLR3M CSC5 WH	CI-2750PC	5107WH	Insert, XLR 3-Pin Male, 5-Pin Compression Screw Connector, White
PWINS XLR3F CSC5 BL	CI-2750NV	5108BL	Insert, XLR 3-Pin Female, 5-Pin Compression Screw Connector, Black
PWINS XLR3F CSC5 SS	CI-2750N0	5108SS	Insert, XLR 3-Pin Female, 5-Pin Compression Screw Connector, Stainless Steel
PWINS XLR3F CSC5 WH	CI-2750PG	5108WH	Insert, XLR 3-Pin Female, 5-Pin Compression Screw Connector, White
PWINS RJ45EC 2RJ45EC PD 2PD BL	CI-2750T0	5115BL	Insert, RJ45 EtherCON, RJ45 EtherCON (Bottom), Punch Down, Punch Down Connector (Bottom), Black
PWINS RJ45EC 2RJ45EC PD 2PD SS	CI-2750S0	5115SS	Insert, RJ45 EtherCON, RJ45 EtherCON (Bottom), Punch Down, Punch Down Connector (Bottom), Stainless Steel
PWINS RJ45EC 2RJ45EC PD 2PD WH	CI-2750TU	5115WH	Insert, RJ45 EtherCON, RJ45 EtherCON (Bottom), Punch Down, Punch Down Connector (Bottom), White
PWINS XLR5M 2XLR5F CSC5 2CSC5 BL	CI-2750T1	5121BL	Insert, XLR 5-Pin Male, XLR 5-Pin Female (Bottom), 5-Pin Compression Screw Connector, 5-Pin Compression Screw Connector (Bottom), Black
PWINS XLR5M 2XLR5F CSC5 2CSC5 SS	CI-2750S4	5121SS	Insert, XLR 5-Pin Male, XLR 5-Pin Female (Bottom), 5-Pin Compression Screw Connector, 5-Pin Compression Screw Connector (Bottom), Stainless Steel
PWINS XLR5M 2XLR5F CSC5 2CSC5	CI-2750TV	5121WH	Insert, XLR 5-Pin Male, XLR 5-Pin Female (Bottom), 5-Pin Compression Screw Con-
PWINS XLR5M 2XLR5M CSC5 2CSC5	CI-2750T4	5122BL	Insert, XLR 5-Pin Male, XLR 5-Pin Male (Bottom), 5-Pin Compression Screw Con-
PWINS XLR5M 2XLR5M CSC5 2CSC5	CI-2750SG	5122SS	Insert, XLR 5-Pin Male, XLR 5-Pin Male (Bottom), 5-Pin Compression Screw Con-
PWINS XLR5M 2XLR5M CSC5 2CSC5 WH	CI-2750TW	5122WH	Insert, XLR 5-Pin Male, XLR 5-Pin Male (Bottom), 5-Pin Compression Screw Connector, 5-Pin Compression Screw Connector (Bottom), White



# Data Receptacles and Connectors

## PWINS | Receptacle Inserts

Catalog Number	Catalog ID	Old Part #	Description
PWINS XLR5F 2XLR5F CSC5 2CSC5 BL	CI-2750T6	5123BL	Insert, XLR 5-Pin Female, XLR 5-Pin Female (Bottom), 5-Pin Compression Screw Connector, 5-Pin Compression Screw Connector (Bottom), Black
PWINS XLR5F 2XLR5F CSC5 2CSC5 SS	CI-2750SK	5123SS	Insert, XLR 5-Pin Female, XLR 5-Pin Female (Bottom), 5-Pin Compression Screw Connector, 5-Pin Compression Screw Connector (Bottom), Stainless Steel
PWINS XLR5F 2XLR5F CSC5 2CSC5 WH	CI-2750TY	5123WH	Insert, XLR 5-Pin Female, XLR 5-Pin Female (Bottom), 5-Pin Compression Screw Connector, 5-Pin Compression Screw Connector (Bottom), White
PWINS XLR3M 2XLR3M CSC5 2CSC5 BL	CI-2750T7	5127BL	Insert, XLR 3-Pin Male, XLR 3-Pin Male (Bottom), 5-Pin Compression Screw Connector, 5-Pin Compression Screw Connector (Bottom), Black
PWINS XLR3M 2XLR3M CSC5 2CSC5 SS	CI-2750SL	5127SS	Insert, XLR 3-Pin Male, XLR 3-Pin Male (Bottom), 5-Pin Compression Screw Connector, 5-Pin Compression Screw Connector (Bottom), Stainless Steel
PWINS XLR3M 2XLR3M CSC5 2CSC5 WH	CI-2750U0	5127WH	Insert, XLR 3-Pin Male, XLR 3-Pin Male (Bottom), 5-Pin Compression Screw Connector, 5-Pin Compression Screw Connector (Bottom), White
PWINS XLR3F 2XLR3F CSC5 2CSC5 BL	CI-2750TK	5128BL	Insert, XLR 3-Pin Female, XLR 3-Pin Female (Bottom), 5-Pin Compression Screw Connector, 5-Pin Compression Screw Connector (Bottom), Black
PWINS XLR3F 2XLR3F CSC5 2CSC5 SS	CI-2750SR	5128SS	Insert, XLR 3-Pin Female, XLR 3-Pin Female (Bottom), 5-Pin Compression Screw Connector, 5-Pin Compression Screw Connector (Bottom), Stainless Steel
PWINS XLR3F 2XLR3F CSC5 2CSC5 WH	CI-2750U1	5128WH	Insert, XLR 3-Pin Female, XLR 3-Pin Female (Bottom), 5-Pin Compression Screw Connector, 5-Pin Compression Screw Connector (Bottom), White
PWINS XLR3M 2XLR3F CSC5 2CSC5 BL	CI-2750TM	5129BL	Insert, XLR 3-Pin Male, XLR 3-Pin Female (Bottom), 5-Pin Compression Screw Connector, 5-Pin Compression Screw Connector (Bottom), Black
PWINS XLR3M 2XLR3F CSC5 2CSC5 SS	CI-2750SS	5129SS	Insert, XLR 3-Pin Male, XLR 3-Pin Female (Bottom), 5-Pin Compression Screw Connector, 5-Pin Compression Screw Connector (Bottom), Stainless Steel
PWINS XLR3M 2XLR3F CSC5 2CSC5 WH	CI-2750U2	5129WH	Insert, XLR 3-Pin Male, XLR 3-Pin Female (Bottom), 5-Pin Compression Screw Connector, 5-Pin Compression Screw Connector (Bottom), White
PWINS XLR5F 2XLR3F CSC5 2CSC5 BL	CI-2750TN	5136BL	Insert, XLR 5-Pin Female, XLR 3-Pin Female (Bottom), 5-Pin Compression Screw Connector, 5-Pin Compression Screw Connector (Bottom), Black

# Data Receptacles and Connectors

## PWINS | Receptacle Inserts

Catalog Number	Catalog ID	Old Part #	Description
PWINS XLR5M 2RJ45EC CSC5 2PD BL	CI-2750TP	5141BL	Insert, XLR 5-Pin Male, RJ45 EtherCON (Bottom), 5-Pin Compression Screw Connector, Punch Down Connector (Bottom), Black
PWINS XLR5M 2RJ45EC CSC5 2PD SS	CI-2750SU	5141SS	Insert, XLR 5-Pin Male, RJ45 EtherCON (Bottom), 5-Pin Compression Screw Connector, Punch Down Connector (Bottom), Stainless Steel
PWINS XLR5M 2RJ45EC CSC5 2PD WH	CI-2750U6	5141WH	Insert, XLR 5-Pin Male, RJ45 EtherCON (Bottom), 5-Pin Compression Screw Connector, Punch Down Connector (Bottom), White
PWINS XLR5F 2RJ45EC CSC5 2PD BL	CI-2750TS	5142BL	Insert, XLR 5-Pin Female, RJ45 EtherCON (Bottom), 5-Pin Compression Screw Connector, Punch Down Connector (Bottom), Black
PWINS XLR5F 2RJ45EC CSC5 2PD SS	CI-2750RT	5142SS	Insert, XLR 5-Pin Female, RJ45 EtherCON (Bottom), 5-Pin Compression Screw Connector, Punch Down Connector (Bottom), Stainless Steel
PWINS XLR5F 2RJ45EC CSC5 2PD WH	CI-2750U7	5142WH	Insert, XLR 5-Pin Female, RJ45 EtherCON (Bottom), 5-Pin Compression Screw Connector, Punch Down Connector (Bottom), White
PWINS RJ45EC RJ45R BL	CI-2750TT	5165BL	Insert, RJ45 EtherCON, RJ45 Female (Rear), Black
PWINS RJ45EC RJ45R SS	CI-2750SX	5165SS	Insert, RJ45 EtherCON, RJ45 Female (Rear), Stainless Steel
PWINS RJ45EC RJ45R WH	CI-2750U8	5165WH	Insert, RJ45 EtherCON, RJ45 Female (Rear), White
PWINS RJ45EC 2RJ45EC RJ45R 2RJ45R BL	CI-2750U9	5166BL	Insert, RJ45 EtherCON, RJ45 EtherCON (Bottom), RJ45 Female (Rear), RJ45 Female (Bottom, Rear), Black
PWINS XLR5M 2XLR5F PASS CSC5 2CSC5 BL	CI-2750UE	5180BL	Insert, XLR 5-Pin Male, XLR 5-Pin Female (Bottom), PassThru, 5-Pin Compression Screw Connector, 5-Pin Compression Screw Connector (Bottom), Black
PWINS XLR5M 2XLR5F PASS IDC5 2IDC5 BL	CI-277MC1	New	Insert, XLR 5-Pin Male, XLR 5-Pin Female (Bottom), PassThru, 5-Pin Insulation Displacement Contact Connector, 5-Pin Insulation Displacement Contact Connector (Bottom), Black
PWINS XLR3M CSC5 BL	CI-2750NH	5181BL	Insert, XLR 3-Pin Male, 5-Pin Compression Screw Connector, Black

# Data Receptacles and Connectors

## PWINS | Receptacle Inserts

Catalog Number	Catalog ID	Old Part #	Description
PWINS XLR5M IDC5 BL	CI-2750PS	5203BL	Insert, XLR 5-Pin Male, 5-Pin Insulation Displacement Contact Connector, Black
PWINS XLR5M IDC5 SS	CI-2750PH	5203SS	Insert, XLR 5-Pin Male, 5-Pin Insulation Displacement Contact Connector, Stainless Steel
PWINS XLR5M IDC5 WH	CI-2750R9	5203WH	Insert, XLR 5-Pin Male, 5-Pin Insulation Displacement Contact Connector, White
PWINS XLR5F IDC5 BL	CI-2750R1	5204BL	Insert, XLR 5-Pin Female, 5-Pin Insulation Displacement Contact Connector, Black
PWINS XLR5F IDC5 SS	CI-2750PJ	5204SS	Insert, XLR 5-Pin Female, 5-Pin Insulation Displacement Contact Connector, Stainless Steel
PWINS XLR5F IDC5 WH	CI-2750RE	5204WH	Insert, XLR 5-Pin Female, 5-Pin Insulation Displacement Contact Connector, White
PWINS XLR5M 2XLR5F IDC5 2IDC5 BL	CI-2750R2	5224BL	Insert, XLR 5-Pin Male, XLR 5-Pin Female (Bottom), 5-Pin Insulation Displacement Contact Connector, 5-Pin Insulation Displacement Contact Connector (Bottom), Black
PWINS XLR5M 2XLR5F IDC5 2IDC5 SS	CI-2750PK	5224SS	Insert, XLR 5-Pin Male, XLR 5-Pin Female (Bottom), 5-Pin Insulation Displacement Contact Connector, 5-Pin Insulation Displacement Contact Connector (Bottom), Stainless Steel
PWINS XLR5M 2XLR5F IDC5 2IDC5 WH	CI-2750RH	5224WH	Insert, XLR 5-Pin Male, XLR 5-Pin Female (Bottom), 5-Pin Insulation Displacement Contact Connector, 5-Pin Insulation Displacement Contact Connector (Bottom), White

# Data Receptacles and Connectors

## PWINS | Receptacle Inserts

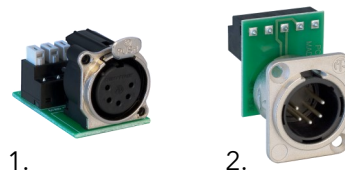
Catalog Number	Catalog ID	Old Part #	Description
PWINS XLR5M 2XLR5M IDC5 2IDC5 BL	CI-2750R6	5225BL	Insert, XLR 5-Pin Male, XLR 5-Pin Male (Bottom), 5-Pin Insulation Displacement Contact Connector, 5-Pin Insulation Displacement Contact Connector (Bottom), Black
PWINS XLR5M 2XLR5M IDC5 2IDC5 SS	CI-2750PM	5225SS	Insert, XLR 5-Pin Male, XLR 5-Pin Male (Bottom), 5-Pin Insulation Displacement Contact Connector, 5-Pin Insulation Displacement Contact Connector (Bottom), Stainless Steel
PWINS XLR5M 2XLR5M IDC5 2IDC5 WH	CI-2750RL	5225WH	Insert, XLR 5-Pin Male, XLR 5-Pin Male (Bottom), 5-Pin Insulation Displacement Contact Connector, 5-Pin Insulation Displacement Contact Connector (Bottom), White
PWINS XLR5F 2XLR5F IDC5 2IDC5 BL	CI-2750R7	5226BL	Insert, XLR 5-Pin Female, XLR 5-Pin Female (Bottom), 5-Pin Insulation Displacement Contact Connector, 5-Pin Insulation Displacement Contact Connector (Bottom), Black
PWINS XLR5F 2XLR5F IDC5 2IDC5 SS	CI-2750PR	5226SS	Insert, XLR 5-Pin Female, XLR 5-Pin Female (Bottom), 5-Pin Insulation Displacement Contact Connector, 5-Pin Insulation Displacement Contact Connector (Bottom), Stainless Steel
PWINS XLR5F 2XLR5F IDC5 2IDC5 WH	CI-2750RP	5226WH	Insert, XLR 5-Pin Female, XLR 5-Pin Female (Bottom), 5-Pin Insulation Displacement Contact Connector, 5-Pin Insulation Displacement Contact Connector (Bottom), White
PWINS XLR5F 2RJ45EC IDC5 2PD BL	CI-2750RW	5242BL	Insert, XLR 5-Pin Female, RJ45 EtherCON (Bottom), 5-Pin Insulation Displacement Contact Connector, Punch Down Connector (Bottom), Black
PWINS XLR5F 2RJ45EC IDC5 2PD SS	CI-2750SV	5242SS	Insert, XLR 5-Pin Female, RJ45 EtherCON (Bottom), 5-Pin Insulation Displacement Contact Connector, Punch Down Connector (Bottom), Stainless Steel

# Data Receptacles and Connectors

## PWCON | Pathway Connectors

Catalog Number	Catalog ID	Old Part #	Description
<b>Connector Assembly with Compression Fit Terminal Block</b>			
PWCON XLR5DM CSC5 Q4	CI-2750C2	2024	Connector, XLR 5-Pin Male "D" Type, 5-Pin Compression Screw Connector, (Qty 4)
PWCON XLR5DF CSC5 Q4	CI-2750C3	2025	Connector, XLR 5-Pin Female "D" Type, 5-Pin Compression Screw Connector, (Qty 4)
PWCON XLR5BM CSC5 Q4	CI-2750C5	2051	Connector, XLR 5-Pin Male "B" Type, 5-Pin Compression Screw Connector, (Qty 4)
PWCON XLR5BF CSC5 Q4	CI-2750C6	2052	Connector, XLR 5-Pin Female "B" Type, 5-Pin Compression Screw Connector, (Qty 4)
PWCON XLR3BM CSC5 Q4	CI-2750CA	2053	Connector, XLR 3-Pin Male "B" Type, 5-Pin Compression Screw Connector, (Qty 4)
PWCON XLR3BF CSC5 Q4	CI-2750CF	2054	Connector, XLR 3-Pin Female "B" Type, 5-Pin Compression Screw Connector, (Qty 4)
PWCON XLR4BM CSC5 Q4	CI-2750CT	2064	Connector, XLR 4-Pin Male "B" Type, 5-Pin Compression Screw Connector, (Qty 4)
PWCON XLR4BF CSC5 Q4	CI-2750CU	2065	Connector, XLR 4-Pin Female "B" Type, 5-Pin Compression Screw Connector, (Qty 4)
PWCON XLR5MF CSC5 Q1	CI-2750L6	2080	Connector, XLR 5-Pin Male and XLR 5-Pin Female, 5-Pin Compression Screw Connector, (Qty 1)
PWCON PH5 CSC5 Q1	CI-2750L9	2094	Connector, 5-Pin Phoenix, 5-Pin Compression Screw Connector, (Qty 1)
<b>Terminal Connector Blocks</b>			
PWCON SPARE CSC5 Q4	CI-2750KY	2091	Connector, Spare, 5-Pin Compression Screw Connector, (Qty 4)
PWCON SPARE CSC6 Q2	CI-2750L2	2092	Connector, Spare, 6-Pin Compression Screw Connector, (Qty 2)
PWCON SPARE CSC3 Q4	CI-2750L0		Connector, Spare, 3-Pin Compression Screw Connector, (Qty 4)

1. **PWCON XLR5BF IDC5** ("B" Type)
2. **PWCON XLR5DM CSC5** ("D" Type)



# Data Receptacles and Connectors

## PWCON | Pathway Connectors

Catalog Number	Catalog ID	Old Part #	Description
			<b>Connector Assembly with 5-Position IDC Connector</b>
PWCON XLR5BM IDC5 Q4	CI-2750C7	2055	Connector, XLR 5-Pin Male "B" Type, 5-Pin Insulation Displacement Contact Connector, (Qty 4)
PWCON XLR5BF IDC5 Q4	CI-2750C9	2056	Connector, XLR 5-Pin Female "B" Type, 5-Pin Insulation Displacement Contact Connector, (Qty 4)
PWCON XLR5DM IDC5 Q4	CI-2750CJ	2057	Connector, XLR 5-Pin Male "D" Type, 5-Pin Insulation Displacement Contact Connector, (Qty 4)
PWCON XLR5DF IDC5 Q4	CI-2750CP	2058	Connector, XLR 5-Pin Female "D" Type, 5-Pin Insulation Displacement Contact Connector, (Qty 4)
PWCON PH5 IDC5 Q1	CI-2750LA	2095	Connector, 5-Pin Phoenix, 5-Pin Insulation Displacement Contact Connector, (Qty 1)
			<b>IDC Connector Blocks</b>
PWCON SPARE IDC5 Q4	CI-2750L4	2098	Connector, Spare, 5-Pin Insulation Displacement Contact Connector, (Qty 4)
PWCON SPARE IDC6 Q2	CI-2750L5	2099	Connector, Spare, 6-Pin Insulation Displacement Contact Connector, (Qty 2)
PWCON SPARE IDC3 Q4	CI-2750KW	2097	Connector, Spare, 3-Pin Insulation Displacement Contact Connector, (Qty 4)

# DIN Enclosures, Power Supplies and Assemblies

## PWENC | DIN System Enclosures



Catalog Number	Catalog ID	Old Part #	Description
PWENC SHELF HOR	CI-274USF	1103	DIN System Enclosure, 2-RU Shelf unit with 2x16.5", Horizontal Rails
PWENC SML VER	CI-2757C6	1105	DIN System Enclosure, Small 10" x 13" x 4.5", Vertical Rails
PWENC MED VER	CI-2757C9	1106	DIN System Enclosure, Medium 10" x 23" x 4.5", Vertical Rails
PWENC MED HOR	CI-2757CC	1107	DIN System Enclosure, Medium 10" x 23" x 4.5", Horizontal Rails
PWENC SML HOR	CI-2757C8	1108	DIN System Enclosure, Small 10" x 13" x 4.5", Horizontal Rails
PWENC LRG VER	CI-274USK	1109	DIN System Enclosure, Large 18.5" x 31.5" x 6.25", Vertical Rails

## PWPWR | Power Supplies

Catalog Number	Catalog ID	Old Part #	Description
PWPWR DT BARL 60W 24VDC	CI-275066	1001-060-24-RM	Power Supply, Desktop, Barrel, 60 Watts, 24 Volts DC
PWPWR DT TERM 100W 48VDC	CI-275067	1001-100-48-RM	Power Supply, Desktop, Compression Fit Terminal, 100 Watts, 48 Volts DC
PWPWR DIN TERM 50W 24VDC	CI-274UT2	1001-050-24-DIN	Power Supply, DIN-mount, Compression Fit Terminal, 50 Watts, 24 Volts DC
PWPWR DIN TERM 100W 24VDC	CI-274UT7	1001-100-24-DIN	Power Supply, DIN-mount, Compression Fit Terminal, 100 Watts, 24 Volts DC
PWPWR DIN TERM 100W 48VDC	CI-274UTF	1001-100-48-DIN	Power Supply, DIN-mount, Compression Fit Terminal, 100 Watts, 48 Volts DC
PWPWR DIN TERM 10W 48TO24VDC	CI-274UTJ	1001-DC-10	Power Supply, DIN-mount, Compression Fit Terminal, 10 Watts, 48 to 24 Volts DC
PWPWR DIN TERM 20W 48TO24VDC	CI-274UTN	1001-DC-20	Power Supply, DIN-mount, Compression Fit Terminal, 20 Watts, 48 to 24 Volts DC
PWACC RJPATCH Q4	CI-27507U	2100-DIN	Pathway Accessory, DIN RJ45 patch (3.5" of rail for 4), (Qty 4)

# DIN Enclosures, Power Supplies and Assemblies

## PWSA | DIN System Assemblies

DIN System Assemblies are factory built, pre-configured in an enclosure with a power supply. When ordering your custom DIN system Assembly, we highly recommend using the [Pathway System Assembly Tool](#), a free downloadable software tool that will allow you to select each DIN device and build the catalog number, with visual confirmation of the assembly layout.



- Custom configure an entire system in a single DIN enclosure
- Choose between 2 enclosure sizes with 2 rail layouts each
- Configure up to 6 DIN devices; dependent on DIN housing size and enclosure size
- Free downloadable **System Assembly Tool** software for straightforward, visual configuration of system and outputs bill of materials. Use the Copy Catalog button to ensure accuracy when ordering. (Win64 and macOS compatible)
- Makes re-ordering same custom assembly easy with one catalog number. System Assembly Tool can save configurations for later recall or alteration and can create printable PDF files.
- Enclosures are NEMA1 compliant
- Assemblies are UL-listed

Pathway System Assembly Tool

Clear All Open Save

PWSA 100W 48VDC MED HOR 1VA16 2RJPATCH 3RJPATCH 4RJPATCH 5VC16 From Catalog Copy Catalog Print (PDF)

Enclosure Wall Station Data Receptacles Location: ER #228

Enclosure Rail Door

**Rail 1** Space Remaining: 1"

PWSA DIN P16 R245 SFP/LOT POE VIA, 16-Ports, R245 Connector, Empty SFP Slots, PoE Enabled

**Rail 2** Space Remaining: 1.125"

PWSA R245 patch, Qty 4 (3.5" of rail for 4)

PWSA R245 patch, Qty 4 (3.5" of rail for 4)

PWSA R245 patch, Qty 1

**Rail 3** Space Remaining: 1"

PWSA DIN VC16 Architectural Gateway, Vignette w 16 Contact Closures (8")

4.1.0-rc.2

Pathway®  
SERVICES SOLUTIONS  
#103 - 1439 17th Ave SE Calgary AB Canada T2S 1J6 Phone: +1 866 617 3074  
© Acuity Electronics Lighting Inc. All Rights Reserved  
www.pathwayconnect.com Location: ER #228

DIN System Enclosure, Medium, Horizontal Rails

11.0" [280mm]  
11.0" [280mm]  
10.0" [254mm]

Pre-Assembled Catalog:  
PWSA 100W 48VDC MED HOR 1VA16 2RJPATCH 3RJPATCH 4RJPATCH 5VC16

Field	Assembly Bill Of Materials:	Description:
Category:		DIN System Enclosure, Medium 10" x 23" x 4.5", Horizontal Rails
PWSA 100W 48VDC MED HOR		DIN System Enclosure, Medium 10" x 23" x 4.5", Horizontal Rails
PWSA DIN TERM 100W 48VDC		Power Supply, DIN-mount, Compression F1 Termination, 100 Watts, 48 Volts DC
PWSA DIN P16 R245 SFP/LOT POE		VIA, DIN-mount, 16-Ports, R245 Connector, Empty SFP Slots, PoE Enabled
PWSA R245 patch, Qty 4		DIN R245 patch, Qty 4 (3.5" of rail for 4)
PWSA R245 patch, Qty 1		DIN R245 patch, Qty 1
PWSA DIN VC16		Architectural Gateway, DIN-mount, Vignette w 16 Contact Closures (8")