

DMX512 Distribution Solved



- Professional gear
- Rugged rack-mountable units with wall-mount and truss-mount options
- Contractor-friendly installation enclosures
- Support for ANSI E1.20 Remote Device Management
- Data receptacles and faceplates
- Receptacles with IDC termination options for CAT5/ CAT6 signal wiring

YOU WON'T FIND ANY SHOWSTOPPERS HERE.

- Connectors on front or rear panel
- RJ45 etherCON option
- Cast enclosure stands up to touring abuse
- Rack-mount ears standard
- Optional wall-mount and truss-mount kits



DMX Rack-mount Repeater with RDM Ethernet-type intelligence for DMX-only networks PWREP RM P8 RDMHUB

- 1 primary input port
- 8 bi-directional output ports
- Cascade multiple repeaters, regardless of mode
- 3 operating modes

RDM Mode

- Seamless handling of DMX512 and RDM packets
- Front panel provides basic RDM controller functions over downstream responders
- Port-by-port RDM enable/disable

Hub Mode

- Automatically senses which bi-directional port is receiving DMX512
- Routes incoming signal to other ports
- Eliminates the need for manual patch bays

Merge Mode

- Automatically senses which bi-directional port is receiving DMX512
- HTP merge with primary input port
- Ideal for incorporating guest consoles and roaming remote focus units



DMX Rack-mount Repeater

The industry standard for construction, features and reliability PWREP RM P8 NONRDM

- 1 primary input
- 1 passive THRU port
- 8 output ports
- Port-by-port power and signal indicators
- 250V protection per port with self-resetting fuses
- Spare transceiver chip included



Wall-mount DIN Installation Repeater Factory Assembled, Contractor Friendly PWREP WM

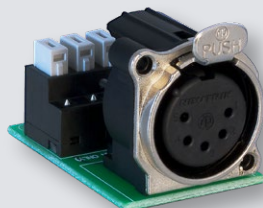
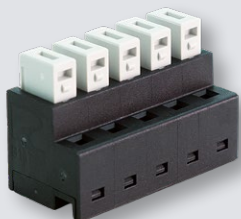
- NEMA 1 enclosures
- Designed for permanent installation
- Standard conduit knockouts
- Pluggable compression screw and insulation displacement contact (IDC) connections
- DMX512-only or DMX512/RDM
- 1 to 4 inputs
- 4, 8, 12 or 16 outputs
- ETL-listed
- Compatible with other DIN devices and enclosures



Data Receptacles Inserts, Faceplates and Connectors PWINF, PWFP, PWCON



- Decorator-style faceplates and receptacles available from stock
- Single-gang to six-gang for standard back boxes customizable in any combination
- Stainless steel, white and black finish options
- All the commonly used XLR and RJ45 etherCON connectors
- Pluggable compression screw or IDC connectors on back of receptacles
- Individual connectors available without insert plates



Pass Thru Connector PWINF XLR5M 2XLR5F PASS CSC5 2CSC5 BL

- Allows multiple connection points on a single DMX512 wire run
- Pushbutton switch chooses between loop out-and-back or signal-thru at the connector location
- Replaces jumpers and pigtails that get lost or broken
- Suitable for both IN and OUT lines



A pioneer in entertainment lighting, Pathway Connectivity is renowned for solid, easy-to-use equipment with comprehensive, robust features.

Our reputation for innovation and reliability is based on over twenty-five years commitment to enhancing the functions and interoperability of lighting systems around the world.



For more info, visit
www.pathwayconnect.com